

Jacqueline

See pages 2-7

ALSO IN THIS ISSUE

NEW and Exclusive **Abundance**

See pages 8-13

NEW Kaffe Fassett **Collective**

See page 27

NEW Jane Austen **at Home**

See pages 18-19

CONNECTING THREADS.

NOVEMBER **2020**

NEW AND EXCLUSIVE FABRICS

JACQUELINE 2-7
Rich elegance with
unexpected playfulness

ABUNDANCE 8-13
Nostalgia with a dose of
autumnal coziness

SPECIAL FEATURES

Jane Austen at Home
by Riley Blake Designs **18-19**

Michael Miller Fabrics **32, 44, 56**

Henry Glass Fabrics **33**

MORE FABRIC & KITS

Windham Fabrics **14-15, 21, 53**

Riley Blake Designs **18-19, 24, 42, 52**

Moda **20, 28, 43**

Kaffe Fassett Collective for
FreeSpirit Fabrics **27**

Edyta Sitar for Andover Fabrics **29**

Maywood Studio **46-47**

EVERYTHING ELSE

Wide Backings **16-17, 48-49**

Tools **28, 43, 45**

Books **30-31, 38-39**

Threads **32-33, 34-35**

Wool Appliqué **36-37**

Batting **40-41**

Gifts from Moda **45**

Order form on page 26

ConnectingThreads.com | 1-800-574-6454

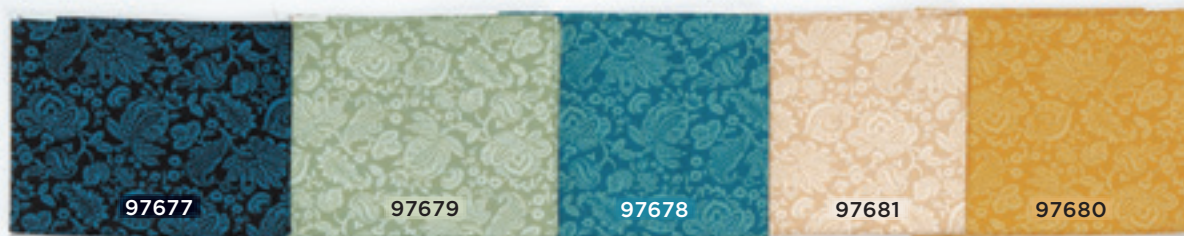


Jacqueline

LUXE
USA COTTON

Vibrant in color and elegant in style, Jacqueline draws inspiration from Jacobean-era art. Blue-greens, golds, and peach atop a rich black background inspire sophisticated, luxurious heirlooms.

\$7.96/yard



FAT QUARTERS

23 pieces,
18" x 22"

99794 **\$58**

10" SQUARES

40 pieces,
10" square

99795 **\$29**

2½" STRIPS

40 pieces,
2½" x 44"

99796 **\$29**

CHARMS

40 pieces,
5" square

99797 **\$9**



A. SUMPTUOUS QUILT KIT

by Connecting Threads

Finished size: 84½" x 100½"

Backing: 8 yards needed

Skill level: Intermediate

100031 Kit with pattern **\$105**



B



B. FROLICKING STARS QUILT KIT

by Purrfect Spots

Finished size: 55½" x 67½"

Backing: 4¼ yards needed

Skill level: Intermediate

100032 Kit with pattern **\$73**

13048D Pattern
download **\$12**



C



C. CRYSTALLINE TABLE TOPPER KIT

by Upper Canada Quiltworks

Finished size: 37" x 37"

Backing included

Skill level: Easy

100030 Kit with pattern **\$45**

13047D Pattern
download **\$9**

D



D. WINDMILL QUILT KIT
by Meadow Mist Designs

Finished size:
61½" x 76½"

Backing: 4¾ yards
needed

Skill level: Easy

100033 Kit with
pattern **\$61**

13049D Pattern
download **\$10**



E. PITTER-PATTER QUILT KIT

by Phoebe Moon Designs

Finished size: 48" x 60"

Backing: 3 yards needed

Skill level: Easy

100027 Kit with pattern **\$42**

13044D Pattern
download **\$6**



E



F. GRANDPA'S BARN QUILT KIT

by Busy Hands Quilts

Finished size: 70" x 90"

Backing: 5½ yards needed

Skill level: Easy

100028 Kit with pattern **\$71**

13045D Pattern download **\$10**



F



G. ADELIN QUILT KIT

by Busy Hands Quilts

Finished size: 72" x 88"

Backing: 5½ yards needed

Skill level: Intermediate

100029 Kit with pattern **\$88**

13046D Pattern download **\$10**



NEW + EXCLUSIVE



ABUNDANCE

LUXE
USA COTTON

Inspired by nostalgic art from European fruit peddlers, Abundance features intricately detailed pears and pomegranates with stylish flowers and foliage. The softly autumnal palette inspires us to make a cup of tea and snuggle up under a warm quilt—a slice of pie is optional, but recommended!



\$7.96 / yard

SAMPLERS

FAT QUARTERS
18 pieces,
18" x 22"
99790 \$47

10" SQUARES
40 pieces,
10" square
99791 \$29

2½" STRIPS
40 pieces,
2½" x 44"
99792 \$29

CHARMS
40 pieces,
5" square
99793 \$9



A. CASSEROLE DISH QUILT KIT
by Phoebe Moon Designs

Finished size: 60" x 68"

Backing: 4 yards needed

Skill level: Intermediate

100021 Kit with pattern **\$66**

13041D Pattern download **\$9**



B. CLOVER VALLEY QUILT KIT

by Cora's Quilts

Finished size: 92" x 92"

Backing: 8½ yards needed

Skill level: Intermediate

100022 Kit with pattern **\$115**

13042D Pattern download **\$10**



CT ♥ Shelley Cavanna!



Spectacular Stars Simplified— Stitch & Flip Quilts with a Lone Star Look

It's never been easier to make Lone Star-style quilts! Shelley has simplified the intricate-looking traditional design by breaking it into easy-to-piece units, without a set-in seam or bias edge in sight. You won't be using templates or cutting angled pieces from strip sets either. Instead, each of the eight designs begins with familiar stitch-and-flip units that are then sewn into blocks.

46920 ~~\$26.99XX~~ **\$21.59** **save 20%**



C. ON THE FENCE QUILT KIT
by Canuck Quilter Designs

Finished size: 61½" x 74"

Backing: 4¾ yards needed

Skill level: Easy

100020 Kit with pattern **\$58**

13040D Pattern download **\$10**





D



D. PETIT LOG CABIN FLOWERS QUILT KIT

by Castilleja Cotton

Finished size: 56½" x 78½"

Backing: 3¾ yards needed

Skill level: Intermediate

100019 Kit with pattern **\$74**

13039D Pattern download **\$10**



E. MAISIE QUILT KIT

by Cora's Quilts

Finished size: 34" x 34"

Backing: 1¼ yards needed

Skill level: Easy

100023 Kit with pattern **\$40**

13043D Pattern download **\$10**



E

F



F. FORGET-ME-KNOTS QUILT KIT

by Connecting Threads

Finished size: 66½" x 80½"

Backing: 5 yards needed

Skill level: Easy

100024 Kit with pattern **\$65**



AZUL

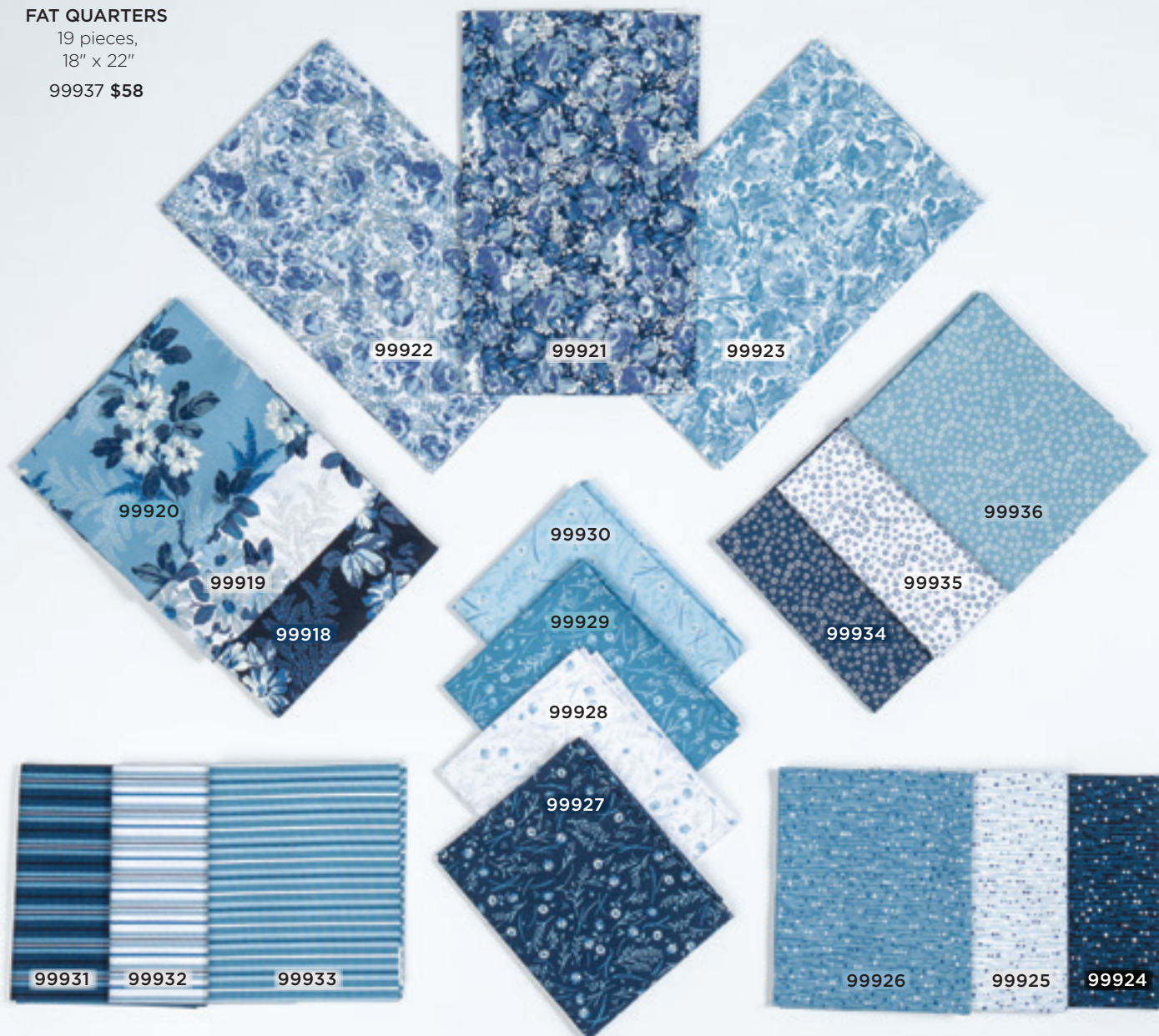
BY WHISTLER STUDIOS FOR WINDHAM FABRICS

\$9.96/yard

FAT QUARTERS

19 pieces,
18" x 22"

99937 \$58





SASHIKO

BY WHISTLER STUDIOS FOR WINDHAM FABRICS

\$10.40/yard



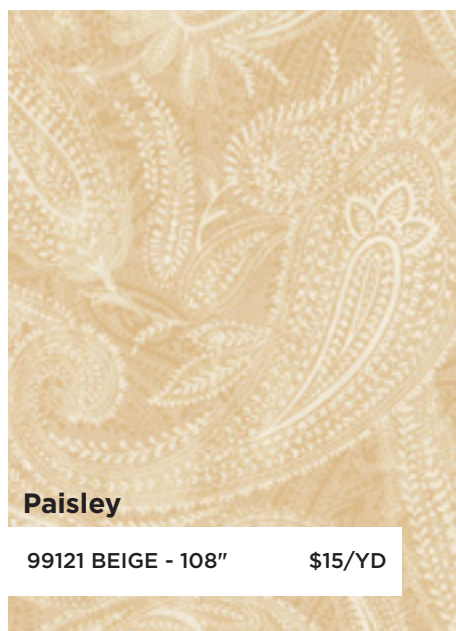
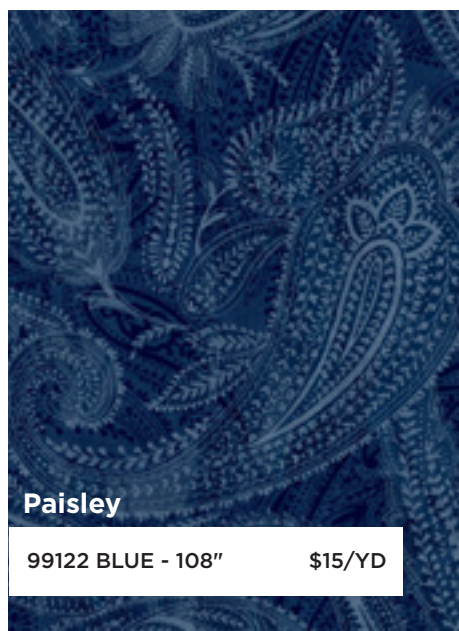
FAT QUARTERS

18 pieces,
18" x 22"

109317 \$55



New from Windham Fabrics





Dropcloth

95340 BLACK - 108"

\$15/YD



Dropcloth

95339 WHITE - 108"

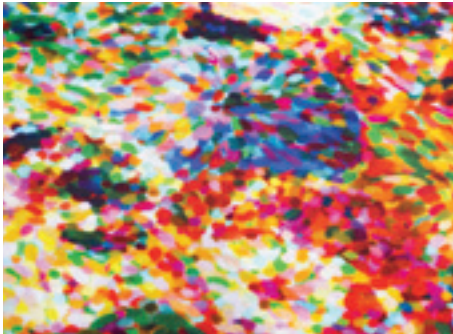
\$15/YD



Music

95335 WHITE - 108"

\$15/YD



Impressionist

96813 MUTLI - 108"

\$15/YD



Newsprint

96322 SPACKLE - 108"

\$15/YD



Paisley

96327 BLUE - 108"

\$15/YD



Dot

96326 MULTI - 108"

\$15/YD



Word Play

96325 WHITE - 108"

\$15/YD



Packed Cats

96329 WHITE - 108"

\$15/YD



Uncorked

96478 CORK - 108"

\$15/YD



Chicken Wire

99161 LINEN - 108"

\$15/YD



Chicken Wire

99162 BLACK - 108"

\$15/YD



JANE AUSTEN AT HOME

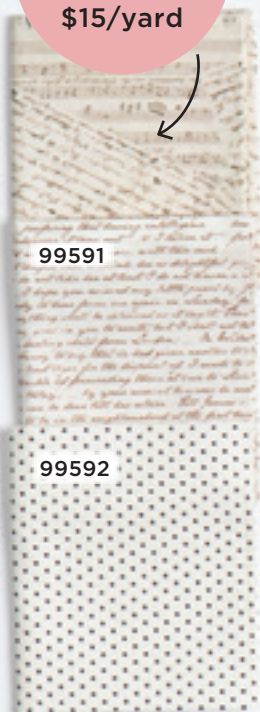
BY JANE AUSTEN'S HOUSE FOR RILEY BLAKE DESIGNS

\$10.40/yard

Immerse yourself in Jane Austen's world!
Floral reproductions are mixed with music written by
Jane herself and passages from her personal letters.

This collection has plenty of *Sense and Sensibility*.
Designed in partnership with Jane Austen's House.

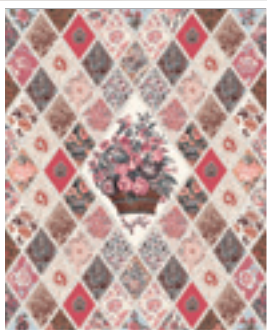
108"
Backing!
99597
\$15/yard



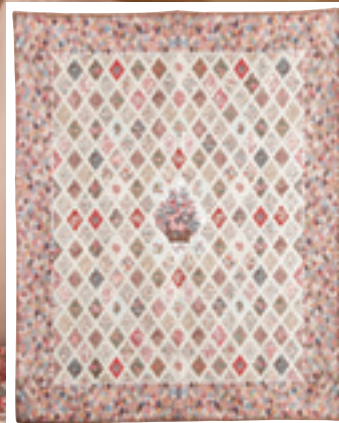
FAT QUARTERS

20 pieces,
18" x 22"

99593 \$65



JANE AUSTEN AT HOME DIAMOND PANEL
44" x 44" 99595 \$14



JANE AUSTEN AT HOME QUILT KIT
by Riley Blake
Finished size: 80" x 100"
Wide Backing: 2½ yards
Regular Backing: 7½ yards needed
99594 Kit with pattern **\$178**

JANE AUSTEN NOTIONS

A. JANE AUSTEN EYE GLASSES SOFT CASE
77975 \$5.50

D. JANE AUSTEN ENAMEL CHARM
77977 \$9

B. JANE AUSTEN EYE GLASSES HARD CASE
77974 \$5.50

E. JANE AUSTEN GREETING CARDS
77978 \$27
Blank Inside

C. JANE AUSTEN PLAYING CARDS
77976 \$9

A

B

C

D

E



ARBORETUM METALLICS

BY MODA
\$10.96/yard



FAT QUARTERS

25 pieces,
18" x 22"

99092 **\$89**

LAYER CAKE

42 pieces,
10" square

99093 **\$39**

JELLY ROLL

40 pieces,
2½" x 44"

99094 **\$39**

CHARMS

42 pieces,
5" square

99095 **\$11**



THISTLE HILL

WHISTLER STUDIOS FOR WINDHAM

\$10.96/yard



HORSE SCENE PANEL
24" x 42" 99132 \$15



FAT QUARTERS
13 pieces,
18" x 22"
99130 \$42



Sunshine Terrace



LUXE
USA COTTON



A. STARLIGHT PLAID THROW QUILT KIT

by Canuck Quilter Designs

Finished size: 64½" x 77¾"

Backing: 5 yards needed

Skill level: Intermediate

96894 Kit with pattern **\$68**

12951D Pattern download **\$10**

\$7.96 / yard

SAMPLERS

FAT QUARTERS

22 pieces,
18" x 22"

95813 **\$54**

10" SQUARES

40 pieces,
10" square

95814 **\$29**

2½" STRIPS

40 pieces,
2½" x 44"

95815 **\$29**

CHARMS

40 pieces,
5" square

95816 **\$9**



B

B. GEOMETRIC GARDEN QUILT KIT

by Meadow Mist Designs

Finished size: 72¼" x 94¾"

Backing: 5¾ yds yards needed

Skill level: Easy

96892 Kit with pattern **\$78**

12949D Pattern download **\$10**

C. CAMDEN ROAD LAP QUILT KIT

by Meadow Mist Designs

Finished size: 60½" x 75½"

Backing: 4¾ yds yards needed

Skill level: Easy

96893 Kit with pattern **\$65**

12950D Pattern download **\$10**

D. SUNSHINE STARS QUILT KIT

by Needle in a Hayes Stack

Finished size: 68" x 82"

Backing: 5¼ yards needed

Skill level: Intermediate

96897 Kit with pattern **\$78**

12954D Pattern download **\$10**



C



D

UNI THE UNICORN

BY RILEY BLAKE DESIGNS

\$10.40/yard

99543

99542

99544



UNI THE UNICORN QUILT KIT

Finished size: 55½" x 66"

Backing: 3¾ yards needed

99535 Kit with pattern **\$49**

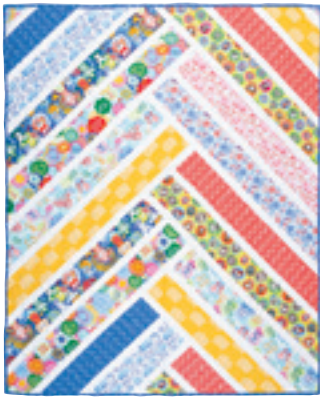


UNI THE UNICORN SOFT BOOK PANEL

36" x 43½" 99541 **\$12**

WOOFS & WAGS

BY KELLI MAY-KRENZ



WOOFS & WAGS—BABY HERRINGBONE QUILT KIT

Finished size: 40" x 50"

Backing: 1½ yards needed

99545 Kit with pattern **\$55**

BABY HERRINGBONE QUILT PATTERN

56335 Pattern packet **\$12**



PATTERN



DINOSAURS QUILT PATTERN

by Elizabeth Hartman

Dinosaurs is a patchwork sampler pattern featuring Brachiosaurus, Stegosaurus, Tyrannosaurus, and Triceratops blocks. Everything is made from square and rectangular pieces sewn together using conventional patchwork techniques. No templates or paper piecing! Pattern includes two quilt sizes, both of which can be made using fat quarters.

48" x 48" small quilt, 69" x 85" large quilt.

56334 Pattern packet **\$24**

About Our Fabric
All quilting fabric is 100% cotton. Fabric by the yard is approximately 42" to 44" wide.
Unless otherwise noted, fabric cuts are available in ¼-yard increments with a 1 yard minimum.

About Our Kits
We do our best to estimate the skill level of our kits as: beginner, easy, intermediate, and advanced.

ITEM NO.	DESCRIPTION				YDS.	QTY.	PRICE	TOTAL
SHIPPING & HANDLING standard shipping 5-14 calendar days					Add Canadian Provincial Sales Tax (% listed on our website)			
Order amount:	\$0.00-64.99	\$65.00-84.99	\$85+					
U.S. add:	\$5.99	FREE	FREE					
Canada, AK, HI & U.S. Terr. add:	\$11.99	\$11.99	FREE					
U.S. 2 DAY FLAT RATE SHIPPING available in Contiguous U.S. only*					Add charge from shipping table when applicable -OR- Add 2 nd day flat rate delivery charge from shipping table			
Order amount:	\$0.00-99.99	\$100+						
add:	\$15.00	\$20.00						
					Order total			

*FREE SHIPPING on all orders over \$65 in the Contiguous United States

County Sales tax for the following states: AL, AR, AZ, CA, CO, CT, FL, GA, HI, IA, ID, IL, IN, KS, LA, MA, MD, ME, MI, MN, MO, MS, NC, ND, NE, NJ, NM, NV, NY, OH, OK, PA, RI, SC, SD, TN, TX, VA, VT, UT, WA, WI, WV, and WY. KY: add 6% sales tax

PAYMENT INFORMATION (DO NOT SEND CASH)

☐ Check/MO (U.S. Funds Only)

☐ VISA

☐ Master Card

☐ Discover/NOVUS Cards

☐ American Express

Grand total (in U.S. dollars)

Expiration Date Mo. Yr

X

Signature required for credit card

Electronic Gift Card Number:

PLEASE FILL OUT INFORMATION FROM BACK OF CATALOG:

Customer No.

Source Code

Name:

Address:

Shipping address if different from mailing address:

Company:

Name:

Address:

Please provide a daytime phone number for easy delivery ()

Enter e-mail address to receive updates and special offers:

Catalog expires December 6th, 2020

Fast Shipping!
Most orders are processed and on their way to you within 24 hours. In stock items, shipped standard shipping, should be on your doorstep within 5-14 calendar days anywhere in the U.S. If not delivered by the 12th day, please call so we can assist you in tracking your order. Back-orders will not be charged additional shipping. We use the U.S. Postal Service for our Standard shipping, please provide us with the appropriate address.

Expedited Delivery
We are pleased to offer 2nd day delivery in the Contiguous U.S. via UPS. Orders placed by 11:30am PST Mon-Fri ship the same day. Orders placed Saturday and Sunday will ship on Monday. Sorry no APO/FPO or post office box delivery. Some products are restricted from expedited shipping, call for details. Add the amount from the "Expedited Delivery" table.

Return Policy
Satisfaction Guaranteed! If our products don't please you, just return them within 90 days of purchase for a full product refund. Sorry, we are unable to accept returns or cancellations on items shipped directly from the manufacturer. Items returned after 90 days are subject to a 25% restocking charge. Create an RMA on our website or call Customer Service, Mon. - Fri. 5:00 am to 6:00 pm, PST. Instructions are on the back of your invoice.

Canadian Orders
Your order will be shipped via the fastest standard service. We handle the payment of duty for your convenience. No charges will be due upon delivery. No checks, cash or money orders please.

Aerosol Products
Due to shipping regulations, aerosol and flammable chemicals can only be sent ground to our Contiguous U.S. customers.

Mail Orders
Just fill out our order form and send your check, money order, or credit card information to Connecting Threads, P.O. Box 87760, Vancouver, WA 98687-7760. Please include a daytime phone so we can contact you with any questions! Sorry, no CODs, cash or purchase orders. There is a \$15.00 service charge on checks returned for NSF.

CONNECTING THREADS
Call 1-800-574-6454
Fax 1 (360) 260-8877
Mon-Fri 6AM-4PM, PST.
ConnectingThreads.com

Mail to: PO Box 87760 Vancouver, WA 98687-7760

Please include the appropriate County Sales tax for the following states: AL, AR, AZ, CA, CO, CT, FL, GA, HI, IA, ID, IL, IN, KS, LA, MA, MD, ME, MI, MN, MO, MS, NC, ND, NE, NJ, NM, NV, NY, OH, OK, PA, RI, SC, SD, TN, TX, VA, VT, UT, WA, WI, WV, and WY. Residents of KY will be charged a flat 6% sales tax. Any underpayments or overpayments will be noted on your invoice. Residents of other states are responsible for paying any applicable sales taxes for their jurisdiction. Tax is calculated on the total value of items ordered including shipping & handling. If you return an item for a refund, you will also receive a refund for the taxes you paid for that item. Sales tax paid on shipping is non refundable.

KAFFE COLLECTIVE FALL 2020

BY KAFFE COLLECTIVE FOR FREE SPIRIT

\$10.96/yard



New book from Kaffe Fassett

KAFFE FASSETT'S QUILTS IN BURANO

Inspired by the Venetian island Burano. This collection of 19 quilts features both new fabric designs from the Kaffe Collective and some of his Classics.

46907 \$29.99 **\$23.99** save 20%

99915

99914

99917

99913

99916

IT'S ELEMENTARY

BY AMERICAN JANE FOR MODA

\$10.40/yard



IT'S ELEMENTARY
ALPHABET RED
PANEL

24" x 44" 100015 \$11



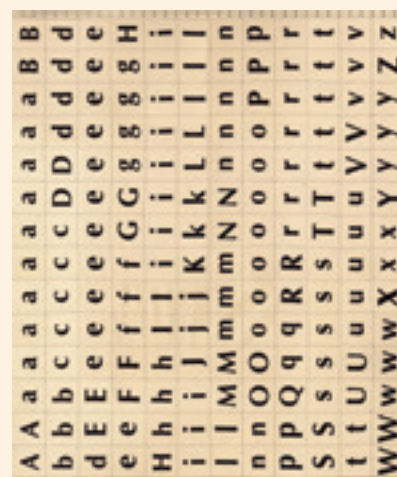
IT'S ELEMENTARY
ALPHABET BLUE
PANEL

24" x 44" 100016 \$11



IT'S ELEMENTARY
ALPHABET BLACK
PANEL

24" x 44" 100017 \$11



IT'S ELEMENTARY
BLOCK LETTERS PANEL

36" x 44" 100018 \$14

TOOLS



FOOLPROOF COLOR WHEEL SET

by Katie Fowler

Take the guesswork out of choosing color schemes! The Foolproof Color Wheel Set helps you pick a pleasing palette, every time. Die-cut "discs" and a printed color wheel illustrate ten color configurations, including analogous, triadic, and split complementary. The color wheel and viewfinder discs are easy and fun to use, so you can choose color combinations that work together effortlessly. A must-have tool for any artist, crafter, quilter, sewist, or DIYer!

Includes 1 colorwheel, 10 die-cut discs, instructions, and convenient storage folder.

8½" x 8½"

82873 \$19.95-XX **\$15.97** save 20%

PERFECT UNION

FROM EDYTA SITAR FOR ANDOVER FABRICS

\$10.96/yard



About the Designer

Edyta's love of fabric began at a very young age when she used her mother's drapes to create her very first project. Fortunately for all of us, Edyta's mother recognized her passion and thus she began her sewing journey. Today Edyta is the author of bestselling books such as Patches of Blue and Patches of Scraps, and she is also known for her gorgeous fabric collections produced by Andover Fabrics.





WONDERFUL WORLD

BY SARAH JANE STUDIOS FOR MICHAEL MILLER FABRICS

\$10.40/yard



WONDERFUL WORLD PANEL

36" x 44" 99641 \$11



BOOKS



THE ULTIMATE GUIDE TO RULERWORK QUILTING

by Amanda Murphy

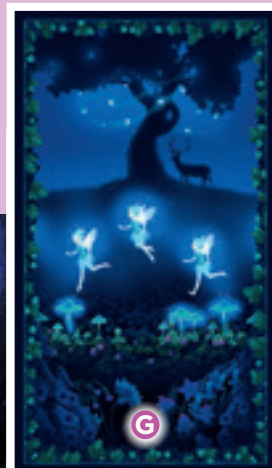
The perfect technical companion to Amanda Murphy's Rulerwork Quilting Idea Book, this in-depth guide has everything you need to know about rulerwork quilting on domestic and longarm machines. Learn how to choose the right rulers and feet, plan out your quilting design with rulers, and combine rulerwork with free-motion quilting. Useful photos teach you how to execute quilting designs with basic straight-line and circle rulers, as well as specialty shapes like waves, clamshells, and feathers.

46882 \$24.95 **\$19.96** **save 20%**

SUMMER NIGHT SOIREE

BY SALT MEADOW STUDIOS FOR HENRY GLASS

\$9.96/yard



FAIRIES ON THE MEADOW PANEL
24" x 44" 99620 \$7



MODERN QUILT BIBLE

by Elizabeth Betts

Learn how to create stunning modern quilts with the Modern Quilt Bible: the ultimate reference guide to patchwork and quilting techniques. Liz Betts explains over 100 techniques used by designers to create eye-catching modern quilts.

Try your hand at improv piecing, free motion quilting, playing with scale, curved piecing and much more. There are featured quilts from the world's best modern quilt designers and ten unique quilted projects using a range of modern quilt techniques so you can practice your new-found skills.

160 pages

46880 \$24.99 **\$19.96** save 20%

ESSENTIAL™

Essential Cotton Spools \$3.49/spool

100% cotton, satin finished for a lustrous sheen. Extra-long staple cotton produces an exceptionally smooth thread with very little lint. 1,200 yard spools, size 50/3.



CT STAFF FAVORITE!

Essential Thread is my go-to thread! I use it for everything from piecing to quilting. I'm excited to see the new colors and add them to my rainbow of threads!

JUDY R., OUTREACH DIRECTOR



BERRY PRESERVES
21598 Retail-\$17.45 \$14.83

SAVE 15% ON SETS!

SEE ALL THREAD INCLUDING SETS
AND CONES ONLINE AT
CONNECTINGTHREADS.COM!



TRUE BLUE
21602 Retail-\$17.45 \$14.83

thread sets

ESSENTIAL™



21258 Saltwater Taffy Thread Set

~~\$34.90~~ **\$29.66**



21265 Bejeweled Thread Set

~~\$34.90~~ **\$29.66**



21261 Country Garden Thread Set

~~\$34.90~~ **\$29.66**



21260 Fruit Salad Thread Set

~~\$34.90~~ **\$29.66**



21262 Countryside

~~\$34.90~~ **\$29.66**



21266 Old Glory

~~\$17.45~~ **\$14.83**



21174 Salt and Pepper

~~\$17.45~~ **\$14.83**



21264 Shoreline Thread Set

~~\$34.90~~ **\$29.66**



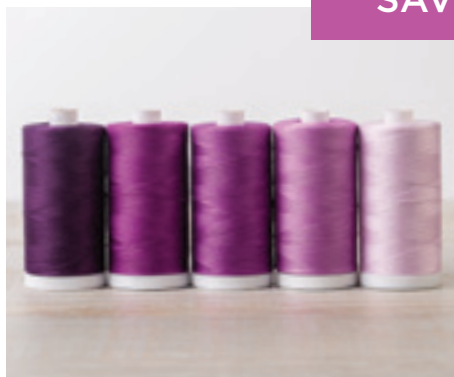
21263 Neutral Thread Set

~~\$34.90~~ **\$29.66**

Our customers ♥ it too!

"I've been sewing with Essential Thread for years now. The only problem is, my machine has become a 'Thread Snob'; yours is the only thread it likes!" - Patty R.

SAVE 15% WHEN YOU BUY A SET!



21598 BERRY PRESERVES ~~\$17.45~~ \$14.83



21599 PURPLE PERSUASION ~~\$17.45~~ \$14.83



21600 DUSTY REDS ~~\$17.45~~ \$14.83



21601 REDWORK ~~\$17.45~~ \$14.83



21608 HEIRLOOM JEWELS ~~\$17.45~~ \$14.83



21602 TRUE BLUE ~~\$17.45~~ \$14.83



21603 SEASIDE ~~\$17.45~~ \$14.83



21597 ENCHANTED FOREST ~~\$17.45~~ \$14.83



21606 FARMHOUSE ~~\$34.90~~ \$29.66



21604 PRECIOUS STONES ~~\$34.90~~ \$29.66



21605 PORCELAIN CHINA ~~\$34.90~~ \$29.66



21595 FAIRY TALE ~~\$34.90~~ \$29.66

WOOL FABRIC BUNDLES AND THREAD SETS

These wool fabric bundles and thread packs are dyed to match perfectly. Not only will your appliqué appear seamless but the colors will complement each other beautifully on any project.



Wool Bundles (contains 6 pieces)
\$24.00 each

- | | |
|-----------------|-----------------|
| A. GREEN 82680 | F. BLUE 82660 |
| B. YELLOW 82662 | G. TEAL 82661 |
| C. ORANGE 82659 | H. NATURE 82674 |
| D. RED 82658 | I. BROWN 82679 |
| E. VIOLET 82675 | J. GREY 82676 |

Thread Sets (contains 6 spools)
\$21.00 each

- | | |
|-----------------|-----------------|
| A. GREEN 21651 | F. BLUE 21648 |
| B. YELLOW 21647 | G. TEAL 21649 |
| C. ORANGE 21644 | H. NATURE 21643 |
| D. RED 21646 | I. BROWN 21650 |
| E. VIOLET 21652 | J. GREY 21645 |

Local Farm Girl

MINI COLOR WOOL BUNDLES

Hand-dyed wool pieces with beautifully vibrant colors.
Now available as fun, color-coordinated bundles,
perfect for small projects.

\$12.00 EACH



These bundles each include three
6½" x 8" pieces of hand-dyed 100%
wool (USA milled).

COTTONWOOD CREATIONS



Wool Pin Keep Patterns

\$6.50 EACH

- | | |
|-------|--------------------------|
| 56205 | PINEAPPLE PATTERN |
| 56293 | PUPPY LOVE PATTERN |
| 56292 | MEOW PATTERN |
| 56206 | LITTLE GOBBLER PATTERN |
| 56208 | CHILLY PATTERN |
| 56207 | FLAKEY PATTERN |
| 56210 | ROBIN & BLUEBIRD PATTERN |



meet
the
author!

Find out the big Diehl

After falling in love with a sampler quilt in the late 1990s, Kim Diehl impulsively purchased the pattern, taught herself the steps needed to make it, and realized she was completely smitten with quilting! Today Kim is well known and loved for her bestselling books as well as her traditionally-inspired fabric designs.



46930 **Simple Sampler**

By Kim Diehl \$26.99 **\$21.59**



46917 **Pumpkin Hill**

By Annie Sutton \$21.99 **\$17.59**



46909 **Walk 2.0**

By Jacquie Gering \$28.95 **\$23.16**



46897 **Sew Happy**

By Sandy Klop \$26.99 **\$21.59**



46896 **Best of Moda Bake Shop**

By Various Designers \$26.99 **\$21.59**



46900 **Love Your Creative Space**

By Lilo Bowman \$19.95 **\$15.96**



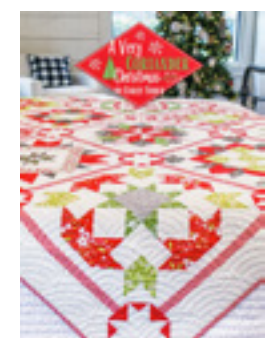
46901 **Sew Magical**

By Mary Hertel \$24.95 **\$19.96**



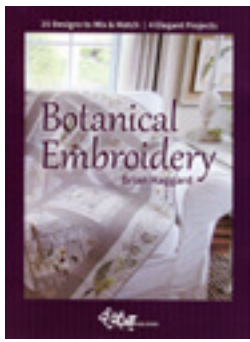
46910 **Beyond the Tee**

By Mary & Jen Cannizzaro \$24.95 **\$19.96**



46895 **A Very Coriander Christmas**

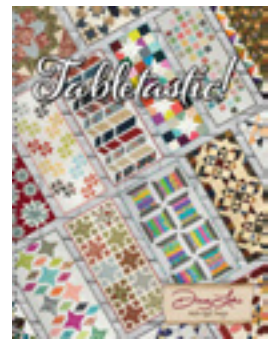
By Corey Yoder \$24.95 **\$19.96**



46904 **Botanical Embroidery Booklet**
By Brian Haggard ~~\$22.95~~ **\$18.36**



46905 **Hexagon Star Quilts**
By Cathy Perlmutter ~~\$21.99~~ **\$17.59**



46881 **Tabletastic!**
By Doug Leko **\$23**



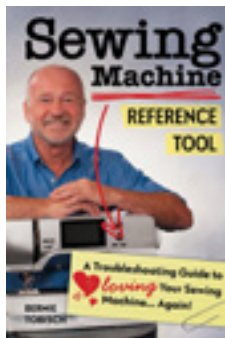
46927 **Playful Precut Quilts**
By Amanda Niederhauser ~~\$26.95~~ **\$21.56**



46928 **Beneath Missouri Stars**
By Carol Dean Jones ~~\$14.95~~ **\$11.96**



46923 **A Quilting Life Monthly Planner**
By Sherri Mcconnell ~~\$18.99~~ **\$15.19**



46908 **Sewing Machine Reference Tool**
By Bernie Tobisch ~~\$19.95~~ **\$15.96**



46924 **Schoolgirl Sampler**
By Kathleen Tracy ~~\$26.99~~ **\$21.59**



46920 **Spectacular Stars Simplified**
By Shelley Cavanna ~~\$26.99~~ **\$21.59**



46929 **Fat Quarter Workshop**
By Stephanie Soebbing ~~\$14.99~~ **\$11.99**



46926 **Stunning 3-D Quilts Simplified**
By Ruth Ann Barry ~~\$22.95~~ **\$18.36**



46921 **Blooms and Blossoms**
By Meg Hawkey ~~\$25.99~~ **\$20.79**



A Guide to Batting

With so many options to choose from, selecting the perfect batting for your project can seem like a daunting task. Fear not, quilter! We've put together a helpful guide to help you understand what makes each type of batting different, so that you can determine what will work best for you and your project!

COTTON BATTING

Cotton is a soft, breathable, and natural fiber. It's machine washable and dryable, has moderate drape, and ages well. It softens and shrinks slightly with washing, giving it a crinkled "lived in" look. Compared to other materials, cotton batting offers the heaviest weight,

GOOD FOR

A flat, traditional look



OUR PICK

This batting is made from the finest long-staple American cotton. Never bleached with harsh chemicals, this batting is the ideal choice for quilts for little ones.



WARM & NATURAL COTTON BATTING

21802 Twin **\$21.99**
21803 Queen **\$31.99**
21804 King **\$47.99**

WOOL BATTING

Wool is lightweight, warm, and moisture-wicking. Contrary to popular belief, it's machine washable and dryable as long as you use gentle, cool cycles.

GOOD FOR

Garments & all-season bed quilts



OUR PICK

With this batting, you get the best of two worlds. It has just the right amount of loft, and it's so warm and cozy!



HOBBS TUSCANY COTTON WOOL BLEND

21302 Twin **\$24.99**
21303 Queen **\$32.99**
21304 King **\$43.99**

POLYESTER BATTING

Polyester is lightweight, but very durable. It is machine washable and dryable, and has a high loft, making it a great choice for those that want to show off their quilting.

GOOD FOR

Making your quilting POP!



OUR PICK

This batting is made from high-quality polyester, needle-punched into a thin base that holds the fibers in place, keeping the batting even and consistent.



SOFT & BRIGHT POLYESTER

21812 Queen **\$18.99**
21813 King **\$31.99**

BLACK BATTING

Black batting is used to give your dark quilts a richer, deeper color.

GOOD FOR

Quilts with dark fabric



OUR PICK

Black-dyed cotton provides quilters a dark batting that will not show through a dark quilt top.



HOBBS HEIRLOOM 80/20 BLACK COTTON

20826 Queen **\$22.99**
21654 King **\$37.99**

FUSIBLE BATTING

Fusible battings eliminate the need for pinning or spray-basting, saving you precious time!

GOOD FOR

Convenience



OUR PICK

Spend less time basting, and more time sewing with this time-saving choice.



HOBBS HEIRLOOM 80/20 FUSIBLE

20628 Crib **\$10.99**
20629 Queen **\$24.99**



KNOW YOUR BATTINGS BOOKLET

by Krista Moser

Never get the wrong batting again with this resourceful, pocket-sized guide along with you to the store! Small but mighty, this booklet will help you choose appropriate batting, use it correctly, and avoid common mistakes so you end up with a perfect quilt every time.

46894 ~~\$8.50~~ **\$6.80** **save 20%**

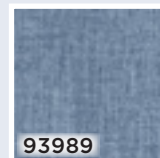


108" BACKING

FADED CHAMBRAY

from P&B Textiles

\$14.96/yard



MY HERITAGE

BY RILEY BLAKE DESIGNS



MY HERITAGE WALL HANGING KIT

Finished size: 36" x 54"

Backing: 2 yards needed

99603 Kit with pattern **\$37**



YESTERDAY

BY JO MORTON FOR MODA



FAT QUARTERS

34 pieces,
18" x 22"

99909 \$110

LAYER CAKE

42 pieces,
10" Square

99910 \$37

JELLY ROLL

40 pieces,
2½" x 44"

99911 \$37

CHARMS

42 pieces,
5" square

99912 \$10

TOOLS



NEW 2021 THAT PATCH WORK QUILT CALENDAR

Includes Instructions for
12 Projects

77973 \$19.99



BIRDIE STICKER SHEET

by Gingiber

Featuring whimsical full
color illustrations from
Gingiber, these matte
finish, die cut stickers
will look great on any
notebook or binder!

5" x 7"

77964 \$5



DOWN ON THE FARM

BY MICHAEL MILLER FABRICS

\$10.40/yard

FARM YARD PANEL

24" x 44"

99489 \$9

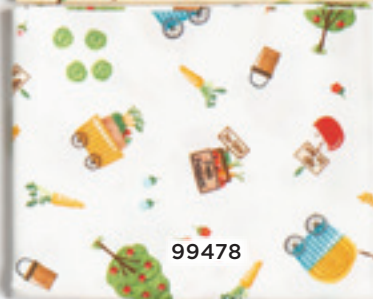


99485

99474



99477



99478



99482



99479



99475

99484

99481

99476

99483

99480

GIFTS FROM MODA



TOOLS

LORI HOLT TAPE MEASURE
60" fabric-covered tape measure



PRIM CORAL STRIPE
82886 \$3.99



PRIM JAZZBERRY
STITCHES
82887 \$3.99



PRIM DAISY BLOOM
82889 \$3.99



PRIM SEA GLASS
GINGHAM
82888 \$3.99

HAPPINESS IS HOMEMADE

BY KRIS LAMMERS FOR MAYWOOD STUDIO

\$9.96/yard



FAT QUARTERS
22 pieces + 2 Panels
18" x 22"

99458 **\$89**

10" SQUARES
42 pieces,
10" square

99459 **\$38**

2½" STRIPS
42 pieces,
2½" x 44"

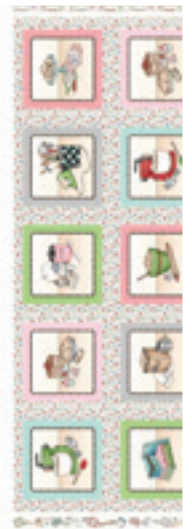
99460 **\$38**

CHARMS
42 pieces,
5" square

99461 **\$10**



KITCHEN TILES QUILT KIT
Finished size: 37" x 49"
Backing: 1½ yards included
 99462 Kit with pattern **\$65**



**KITCHEN BLOCKS
 CREAM PANEL**
 24" x 44"
 99442 **\$8**

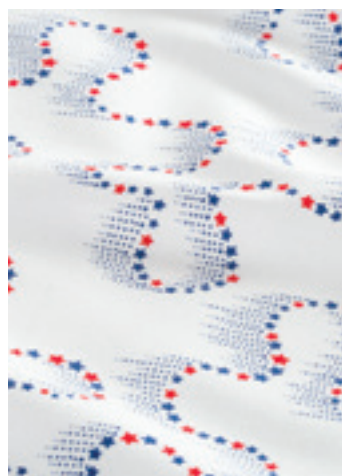


**KITCHEN BLOCKS
 BLACK PANEL**
 24" x 44"
 99443 **\$8**

Exclusive
Wide Backing Fabrics

OUR MOST POPULAR BACKING PRINTS
AVAILABLE IN 108" \$14.96/Yard

Polka Dot
93992 - PRIMARY



Trail of Stars
93991 - WHITE



Trail of Stars
94768 - BRICK



Trail of Stars
94766 - IVORY



Trail of Stars
94767 - NAVY



Elegant Floral
93983 - LT STONE



Elegant Floral
93982 - LT STEEL BLUE



Elegant Floral
93984 - LT TAUPE



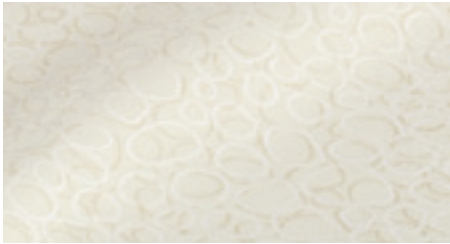
Cobblestone
93978 - NATURAL



Cobblestone
93973 - CREAM



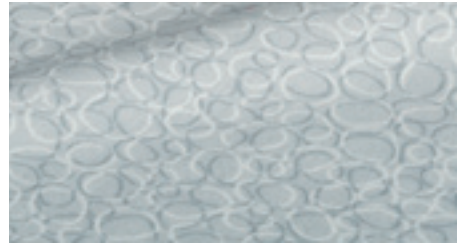
Cobblestone
93974 - LT HONEYSUCKLE



Cobblestone
93976 - IVORY



Cobblestone
93981 - WHITE ON WHITE



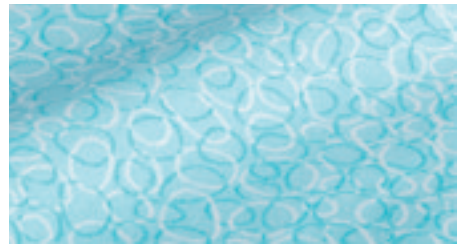
Cobblestone
93979 - SILVER



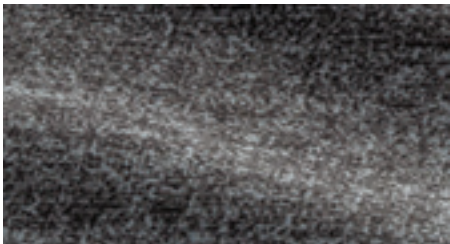
Cobblestone
93975 - GLACIER



Cobblestone
93977 - LT DAHLIA



Cobblestone
93980 - AQUAMARINE



Faded Chambray
93986 - LT COAL



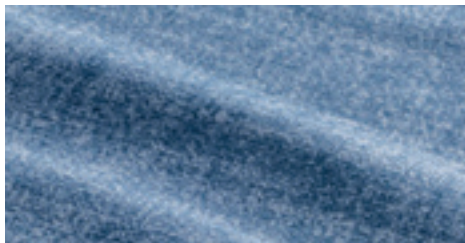
Faded Chambray
93988 - LT WINE



Faded Chambray
93985 - LT BROWN



Faded Chambray
93987 - LT NATURAL



Faded Chambray
93989 - DENIM



Hand Drawn Lines
93990 - WHITE ON WHITE



Midnight Soirée



A. MIDNIGHT GARDENS QUILT KIT
by Phoebe Moon Designs
Finished size: 88" x 99"
Backing: 8 yards needed
Skill level: Intermediate
99079 Kit with pattern **\$137**
12994D Pattern download **\$10**



\$7.96 / yard

SAMPLERS

FAT QUARTERS	10" SQUARES	2½" STRIPS	CHARMS
17 pieces, 18" x 22"	40 pieces, 10" square	40 pieces, 2½" x 44"	40 pieces, 5" square
96826 \$42	96827 \$29	96828 \$29	96829 \$9

B. MIDNIGHT CROSSING QUILT KIT

by Nancy Rink

Finished size: 69" x 82½"

Backing: 5 yards needed

Skill level: Intermediate

99082 Kit with pattern **\$81**

12997D Pattern download **\$10**



C. GINGHAM GIRLS QUILT KIT

by Cora's Quilts

Finished size: 72" x 90"

Backing: 5¾ yards needed

Skill level: Intermediate

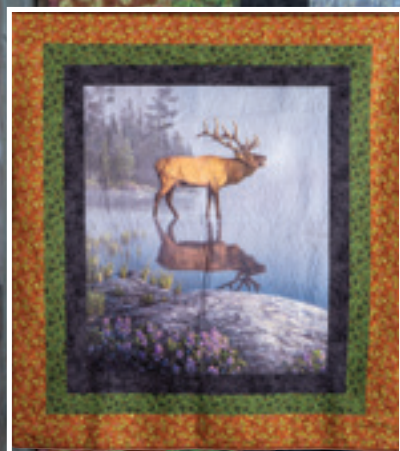
99080 Kit with pattern **\$109**

12995D Pattern download **\$10**



NATURE'S FINEST

BY RILEY BLAKE DESIGNS



ELK PANEL QUILT KIT

Finished size: 58" x 65"

Backing: 3¾ yards

99394 Kit with pattern \$55



PILLOW PANEL

44" x 36" 99389 \$13



**OLD HOMESTEAD
PANEL**

36" x 44" 98689 \$15

ONE OF A KIND

BY WHISTLER STUDIOS
FOR WINDHAM FABRICS



SUNLIT ELK PANEL

36" x 44" 98690 \$15



DEER PANEL

36" x 44" 97637 \$14



HORSES PANEL

36" x 44" 97638 \$14

Coming Home





CONNECTING THREADS

HOLIDAY SHOP

Come visit our holiday shop and get started on your festive projects!
While you're there, why not pick up a gift card or two for
those special crafters in your life? They deserve it!

connectingthreads.com/holidayfabric

CONNECTING THREADS

ORDERING AND CUSTOMER SERVICE

Call 1-800-574-6454 Mon-Fri 6am-4pm PST.

Fax 1-360-260-8877 anytime.

ConnectingThreads.com

PO Box 87760

Vancouver, WA 98687-7760

Catalog expires 12.06.2020

Current resident or:

PRSRT STD
U.S. Postage
PAID Crafts
Group

Customer No.

Source Code

--	--

FREE SHIPPING
on all US orders \$65+!
See Pg. 28 for details.



CONNECT WITH US!
Join our online communities.
#TogetherWeQuilt



Our Wonderful World

FROM
MICHAEL MILLER
FABRICS

PAGE
30

